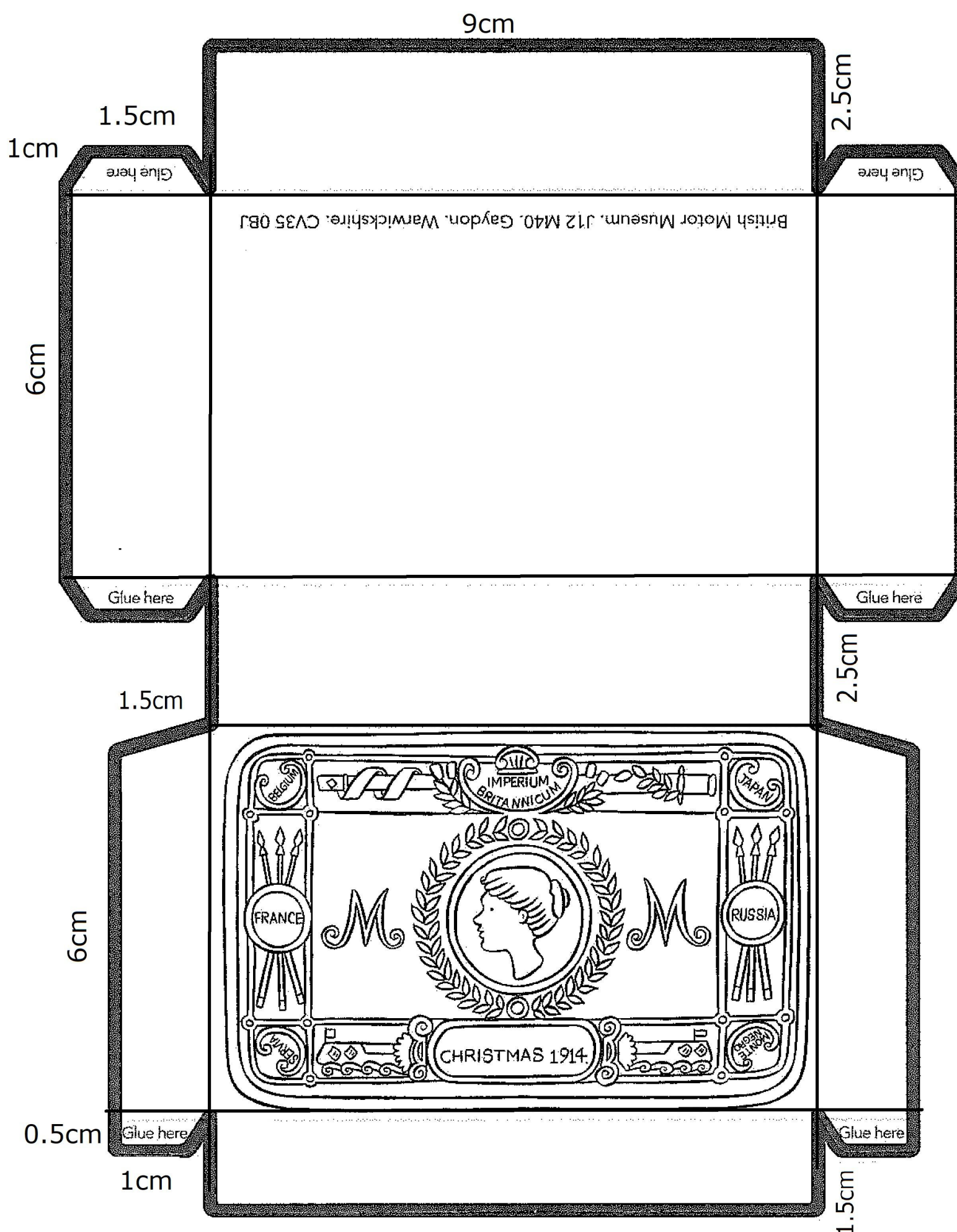


Princess Mary Gift Fund Box



INSTRUCTIONS

1. Print out the template or draw your own using scrap card, a ruler and the measurements written on the template.
2. Decorate your box any way you like. You could colour it in or stick some decorations on the box!
3. Cut the box out along the thick lines.
4. Fold up the box along the thinner lines.
5. Use the glue tabs to stick your box together.